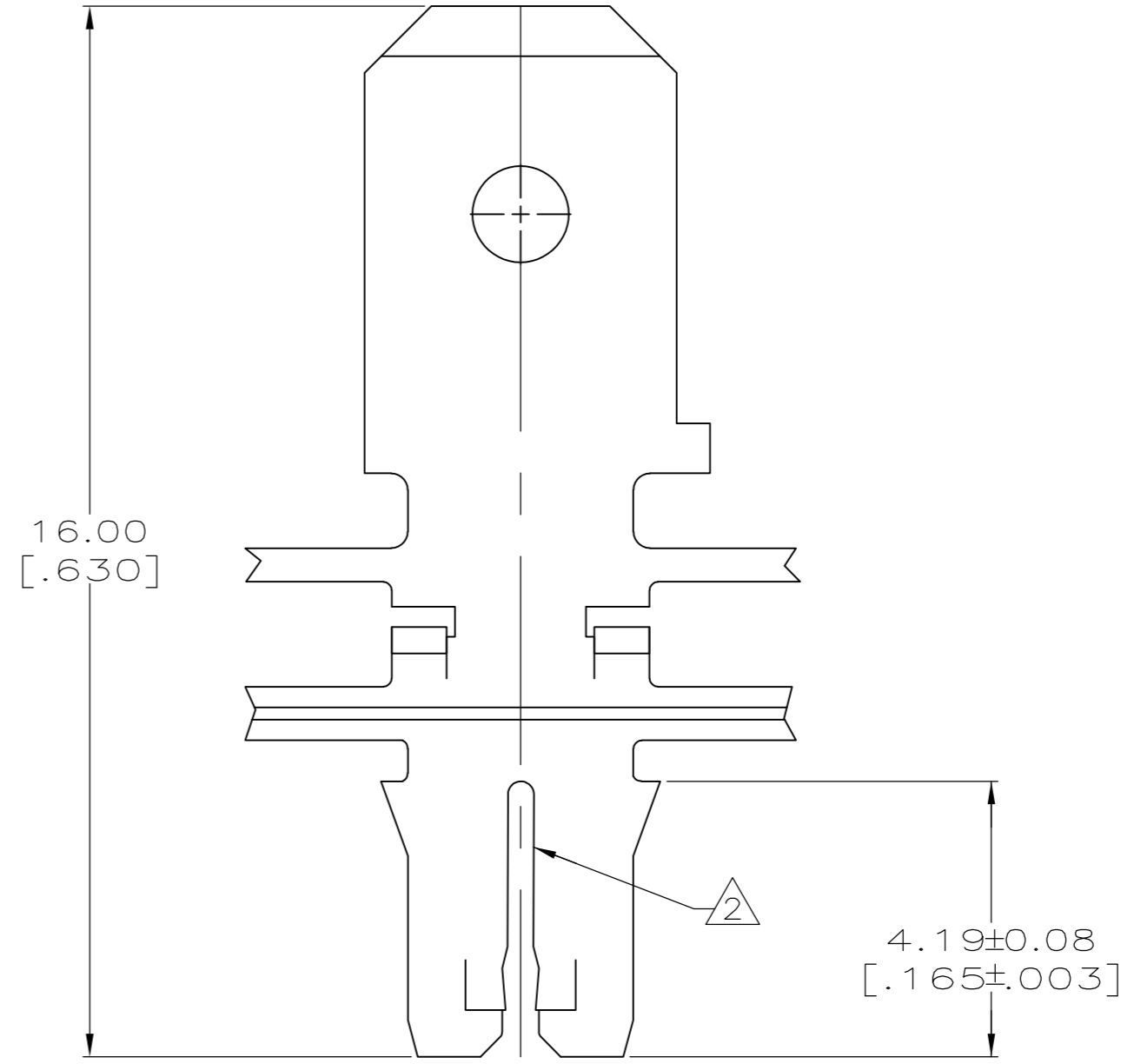
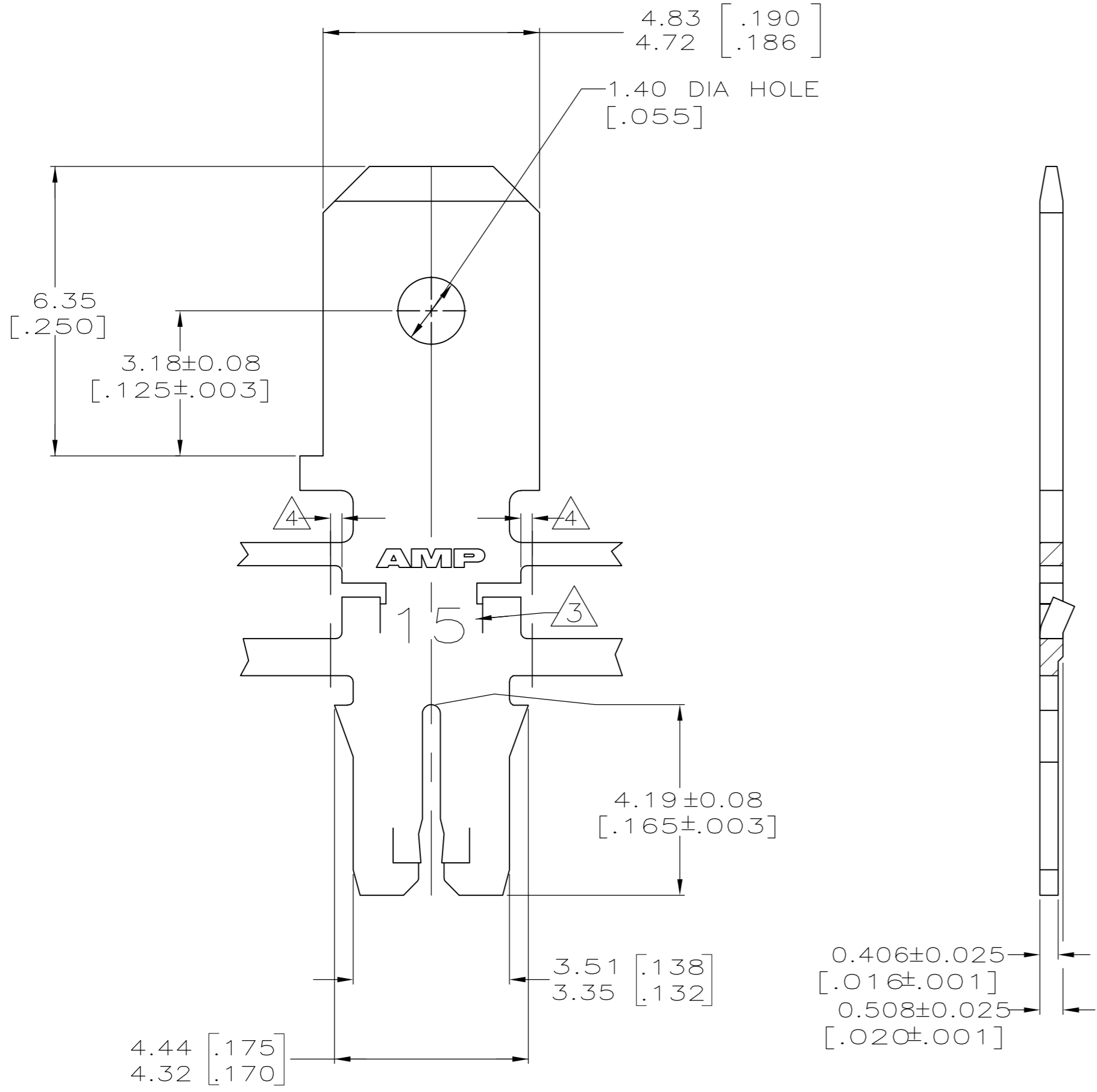


THIS DRAWING IS UNPUBLISHED. RELEASED FOR PUBLICATION  
 © COPYRIGHT - By - ALL RIGHTS RESERVED.

LOC		DIST		REVISIONS			
P	LTR	DESCRIPTION		DATE	DWN	APVD	
AF	50	F1	ECR-13-017177	05NOV13	PKS	RRP	

- 1 CONTINUOUS STRIP ON REELS WITH TERMINALS LOCATED ON  $6.86 \pm 0.08$  [ $.270 \pm .003$ ] CENTERS
- 2 SLOT ACCEPTS  $0.57-0.81\text{mm}$  [#23-#20] AWG COPPER MAGNET WIRE. TWO WIRES OF THE SAME SIZE MAX PER SLOT FOR #23 GAGE. ONE WIRE MAX PER SLOT FOR #22-#20 AWG
- 3 IDENTIFICATION NUMBER 15 FOR THE MAGNET WIRE SLOT SIZE
- 4  $0.25$  [.010] MAX CARRIER CUT-OFF TABS
- 5 PREPRODUCTION - F.A.S.R. REQUIRED.



082 BRASS	5 63713-2
4M BRASS	63713-1
MATERIAL	PART NO

THIS DRAWING IS A CONTROLLED DOCUMENT.		DWN	L.A.MAYER	9-27-93	<b>STE</b> TE Connectivity
DIMENSIONS: INCHES		CHK	M.S. FEHER	9-27-93	
TOLERANCES UNLESS OTHERWISE SPECIFIED:		APVD	-	-	NAME
0 PLC	± -	PRODUCT SPEC		TAB, 4.75 [.187] FASTON™	
1 PLC	± -	APPLICATION SPEC		MAG-MATE™ Slim Line	
2 PLC	± 0.13 [.005]	114-2140		SIZE	A2
3 PLC	± -	WEIGHT		CAGE CODE	00779
4 PLC	± -	FINISH		DRAWING NO	C=63713
ANGLES	± -	TIN PLATED		RESTRICTED TO	-
MATERIAL	SEE TABLE	CUSTOMER DRAWING		SCALE	10:1
				SHEET	1 of 1
				REV	F1