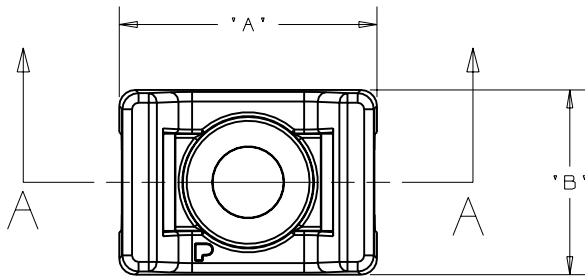


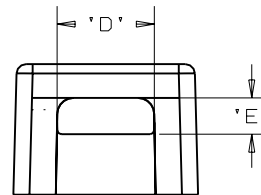
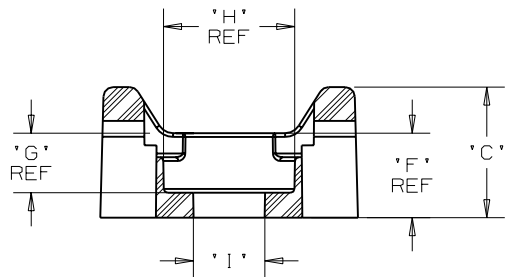
THIS COPY IS PROVIDED ON A RESTRICTED BASIS AND IS NOT TO BE USED IN ANY WAY DETRIMENTAL TO THE INTERESTS OF PANDUIT CORP.

| PANDUIT PART NO. | RECOMMENDED FASTENER | 'A' | 'B' | 'C' | 'D' | 'E' | 'F' | 'G' | 'H' | 'I' | WEIGHT | | PRODUCT COMPATIBLE WITH CABLE TIE CROSS-SECTION(S) |
|---------------------------|----------------------|----------------|----------------|---------------|---------------|---------------|---------------|---------------|----------------|---------------|-----------------|-----------|--|
| | | | | | | | | | | | lbs/100 pcs | g/100 pcs | |
| SGTM2S8- TMSG2S8- _ | #8 (M4) SCREW | 0.66 (16.7) | 0.48 (12.2) | 0.34 (8.6) | 0.25 (6.3) | 0.09 (2.3) | 0.22 (5.6) | 0.15 (3.8) | 0.333 (8.7) | 0.18 (4.6) | 0.180 (81.6) | | S, I, M SG100M, SG150I, SG200S, SG250S, SG300S, SG370S |



NOTES:

- SEE CURRENT PRICE SHEET FOR PART NUMBER SUFFIX DESIGNATION FOR PACKAGE SIZE.



SECTION A - A

DIMENSIONS IN BRACKETS ARE METRIC [mm]

CAD FILENAME/LAYERS

G02789BE_PB_SGTM2S8_02

PANDUIT

CORP.

TINLEY PARK, ILLINOIS

TIE MOUNT - (SUPER GRIP TIES)
SGTM2S8- & TMSG2S8-
_

UNLESS OTHERWISE SPECIFIED,
DIMENSIONAL TOLERANCES ARE:

(.X) ±0.05 (1.3) (.XXX) ±0.010 (0.25)
(.XX) ±0.02 (0.5) ANGLES ± 5°

UNLESS OTHERWISE SPECIFIED,
ALL DIMENSIONS ARE GIVEN
IN INCHES, THIRD ANGLE
PROJECTION.

DRAWN BY

TMSA

MAT'L:

NYLON 6/6

SCALE

NONE

DATE

03-22-05

DRAWING NO.

GB2987BE

DWG

A
SIZE

| REV | DATE | BY | CHK | DESCRIPTION | ECN | R | CUST | SUP |
|-----|----------|------|-----|---------------------------------------|----------|---|------|-----|
| 2 | 3/9/06 | JAD | | UPDATE CABLE TIE CALLOUTS IN TABLE | GB2987BE | 2 | | |
| 1 | 8-24-05 | TMSA | | ADDED PART NUMBER SGTM2S8- _ | GB2987BE | 1 | | |
| R | 03-22-05 | TMSA | | INITIAL RELEASE | GB2987BE | R | | |